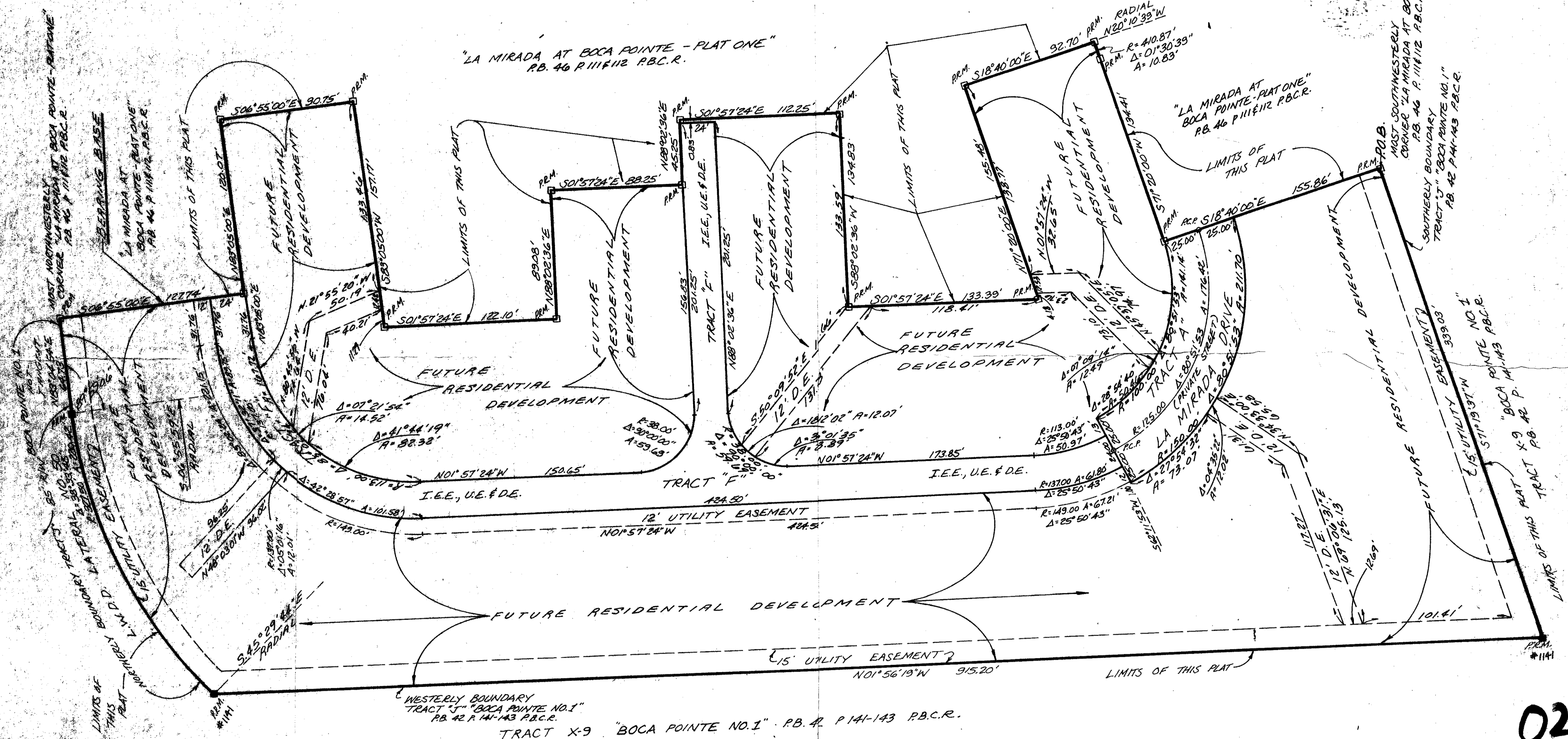
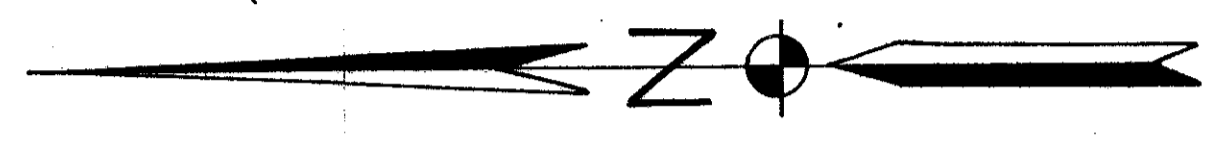
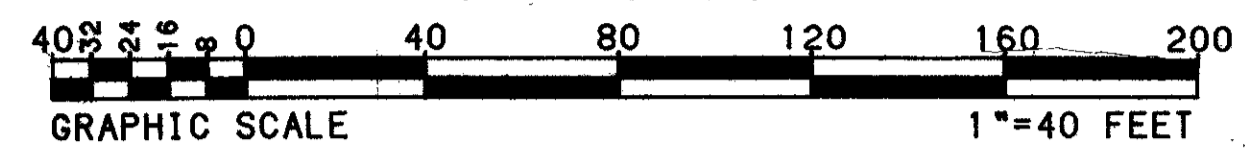


LA MIRADA AT BOCA POINTE - PLAT TWO

"PART OF A P.U.D."

BEING A REPLAT OF A PORTION OF TRACT "J"
OF THE PLAT "BOCA POINTE NO. 1", PLAT BOOK 42,
PAGES 141 THRU 143 INCLUSIVE, PALM BEACH COUNTY RECORDS
LYING IN SECTION 33, TOWNSHIP 47 SOUTH, RANGE 42 EAST
PALM BEACH COUNTY, FLORIDA
MAY 1984



SURVEY NOTES:

- 1) BEARINGS AS SHOWN HEREON ARE BASED UPON THE PLAT "LA MIRADA AT BOCA POINTE - PLAT ONE" AS RECORDED IN PLAT BOOK 46, AT PAGES 111 AND 112, PALM BEACH COUNTY RECORDS.
- 2) THE BEARING BASE FOR THIS PLAT IS THE NORTHERLY AND WESTERLY LINE OF THE PLAT "LA MIRADA AT BOCA POINTE - PLAT ONE" HAVING A BEARING OF SOUTH 06°55'00" EAST.
- 3) ■ DENOTES FOUND P.R.M. (PERMANENT REFERENCE MONUMENT) NO. 1141
□ DENOTES FOUND P.R.M. (PERMANENT REFERENCE MONUMENT) NO. 2883
- 4) ○ DENOTES SET P.C.P. (PERMANENT CONTROL POINT) NO. 3608
- 5) D.E. INDICATES DRAINAGE EASEMENT
U.E. INDICATES UTILITY EASEMENT
I.E.E. INDICATES INGRESS & EGRESS EASEMENT
P.B.C.R. INDICATES PALM BEACH COUNTY RECORDS
- 6) NO BUILDINGS OR ANY KIND OF CONSTRUCTION SHALL BE PLACED ON UTILITY OR DRAINAGE EASEMENTS.
- 7) NO STRUCTURES, TREES OR SHRUBS SHALL BE PLACED ON DRAINAGE EASEMENTS
- 8) APPROVAL OF LANDSCAPING ON UTILITY EASEMENTS OTHER THAN WATER AND SEWER EASEMENTS SHALL BE ONLY WITH THE APPROVAL OF ALL UTILITY COMPANIES OCCUPYING SAME.

- 9) THERE ARE MINOR VARIATIONS BETWEEN THE BOUNDARY DATA FOR TRACT "J" AS SHOWN ON THE PLAT "BOCA POINTE NO. 1" AS RECORDED IN PLAT BOOK 42 AT PAGES 141 THRU 143, PALM BEACH COUNTY RECORDS, AND THE BOUNDARY DATA AS SHOWN ON THIS PLAT. THE BOUNDARY DATA AS SHOWN HEREON IS BASED UPON A FIELD SURVEY OF THE FOUND CORNER MONUMENTATION OF THE SUBJECT PROPERTY.

0211-009

LA MIRADA AT BOCA POINTE #2

PREPARED BY
CARMEN THOMPSON & ASSOCIATES INC.
SURVEYORS ENGINEERS PLANNERS ARCHITECTS
5164 ONECROUSE BLVD., WEST PALM BEACH, FLORIDA 33409
DATED: September 21, 1984 BY: Carmen Thompson

DRAWING NUMBER
PLAN HOLD CORPORATION • IRVINE, CALIFORNIA
REORDER BY NUMBER 0254R

DRAWING NUMBER
PLAN HOLD CORPORATION • IRVINE, CALIFORNIA
REORDER BY NUMBER 0254R

DRAWING NUMBER
PLAN HOLD CORPORATION • IRVINE, CALIFORNIA
REORDER BY NUMBER 0254R